

## **Larson Systems Inc.**

13847 Aberdeen Street NE  
Ham Lake, MN 55304-6789  
www.larsonsystems.com

Phone: 763-780-2131  
Fax: 763-780-2182  
Email: info@larsonsystems.com

## **USB Driver Installation & Setup for ECT, CDHT, FDHT, DHT, Valve Spring Tester, & UTWCS**

To install the USB driver, download and run the installer ***USB Driver Installer*** (*CDM21228\_Setup.exe*) executable file. The executable file can be contained in a zip file when downloaded. If so, it must be extracted first before it can be run.

When the tester is connected to the PC, it will be recognized as a ***serial port***. A new serial port will be created in the Ports branch in the PC's Device Manager.

Any program that can communicate using serial ports can now receive information from the tester.

### ***User serial port settings:***

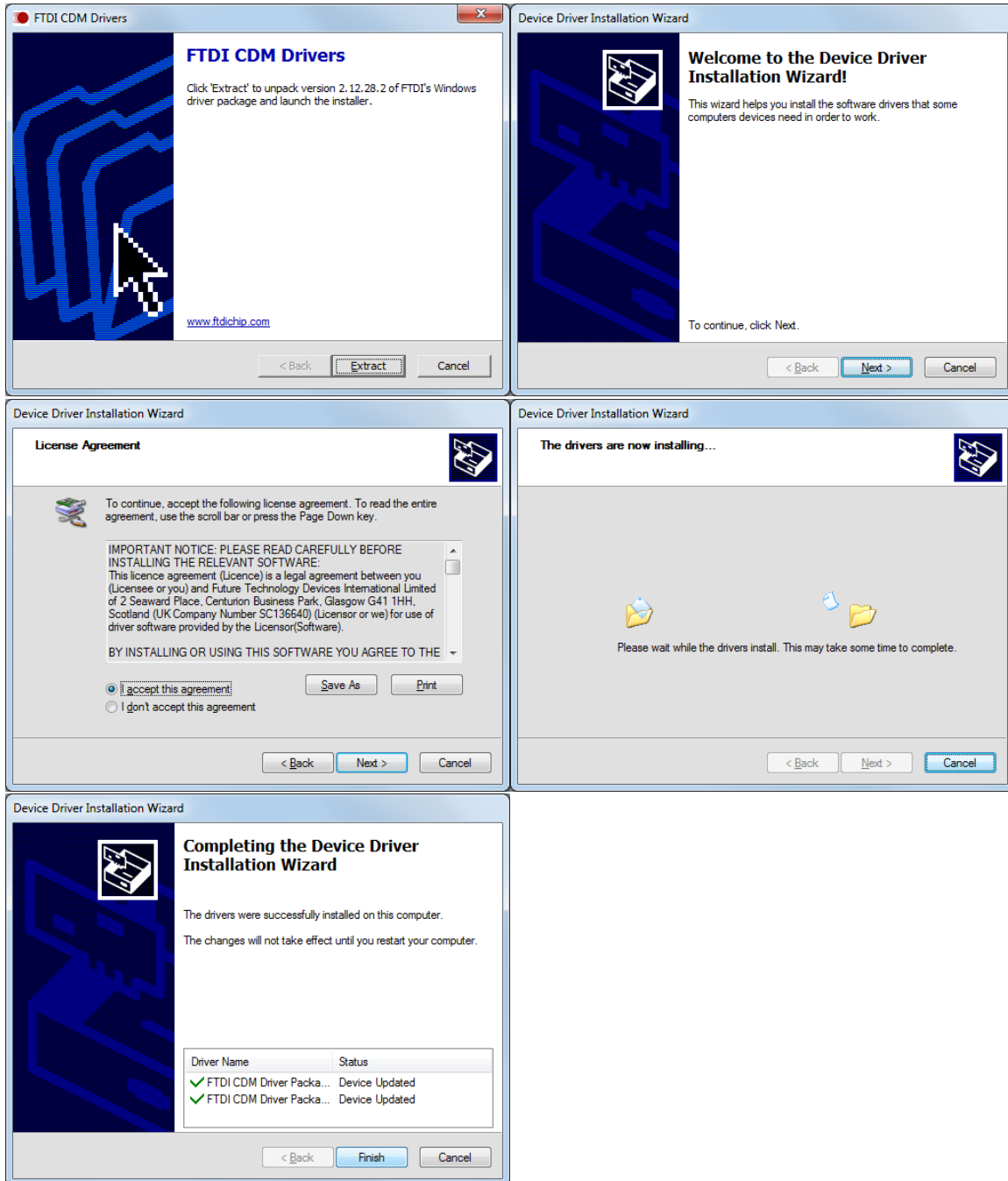
- 115200 or 128K baud
- 8 data bits
- 1 stop bit
- No parity
- No flow control

Detailed step-by-step installation instructions follow.





- 1) Install the USB driver. The tester uses FTDI USB hardware to create a Virtual Com Port (VCP) on the computer. The computer may have to be rebooted after driver installation.





- 2) Turn on the tester.

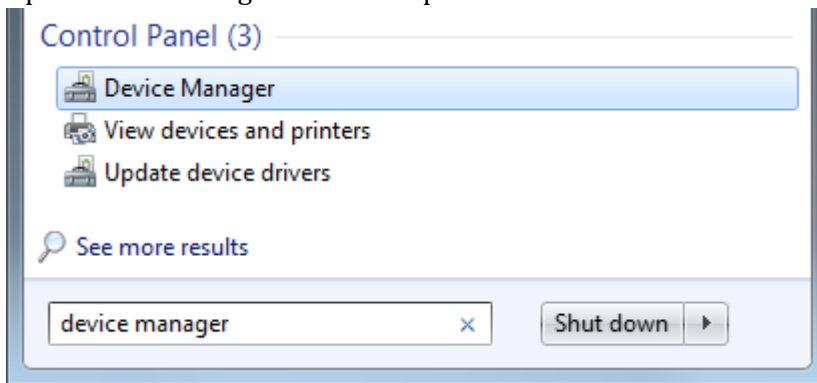


- 3) Connect a USB cable between the tester and the computer.

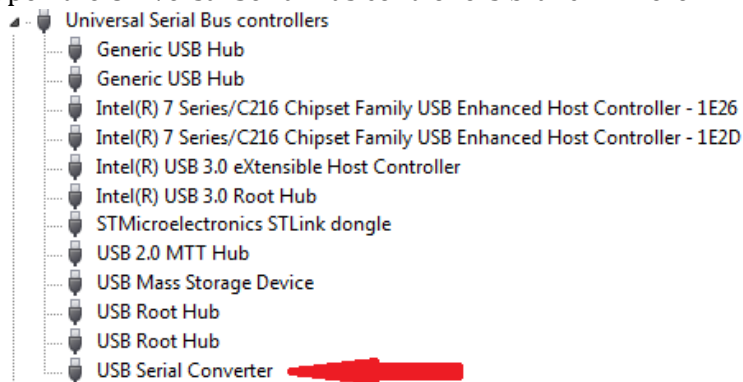




- 4) Open Device Manager on the computer.

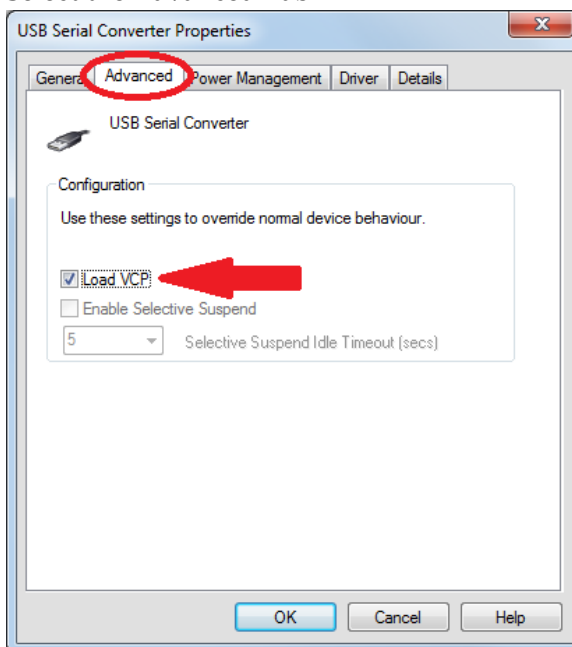


- 5) Open the Universal Serial Bus controllers branch. There will be a USB Serial Converter entry.



Double click this entry to bring up the Properties.

- 6) Select the Advanced Tab.



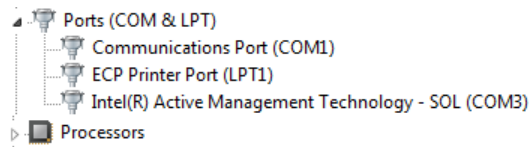
Check the "Load VCP" option.

Click OK to close the USB Serial Converter Properties window.

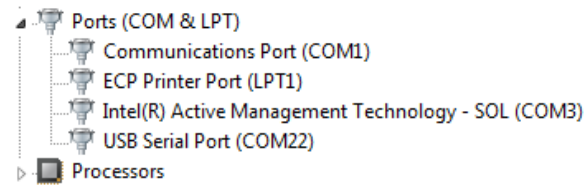


- 7) Unplug the USB cable, wait 5 seconds, then plug the cable back in. This will reset the USB driver to create the Virtual Com port. There will now be a new entry in the Ports (COM & LPT) branch in the Device Manager.

Before :

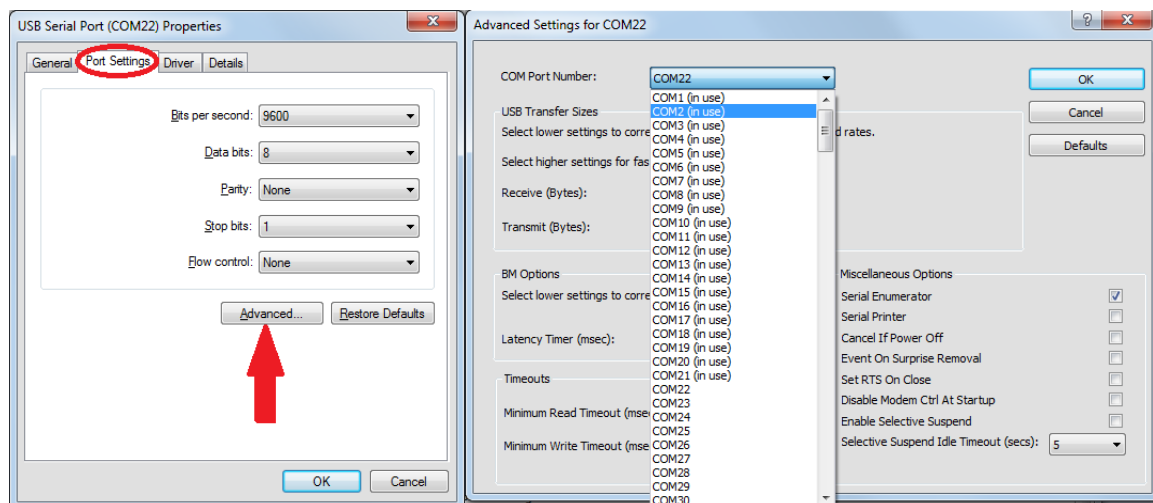


After:



- 8) The port number may be too large for some programs. It can be changed if necessary. Double click on the entry to bring up its properties.

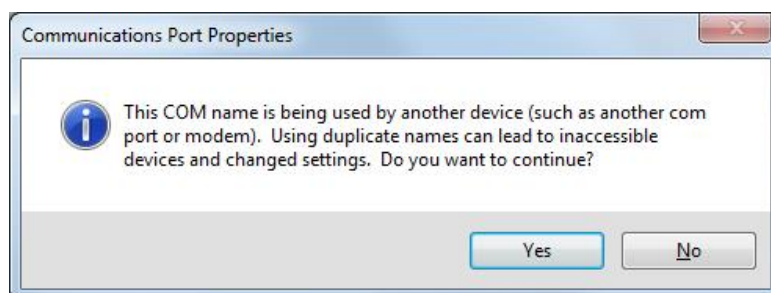
Select the Port Settings tab, then click the Advanced button.



Select a new com port number from the drop down list. If there are other devices currently using a Com port, do not select that port number.

Click OK to accept the selected port number.

If you do select another Com port that is labeled as “In Use” you will receive the following warning. Verify that there is no other device currently connected and using the Com port before clicking Yes to accept the port number.





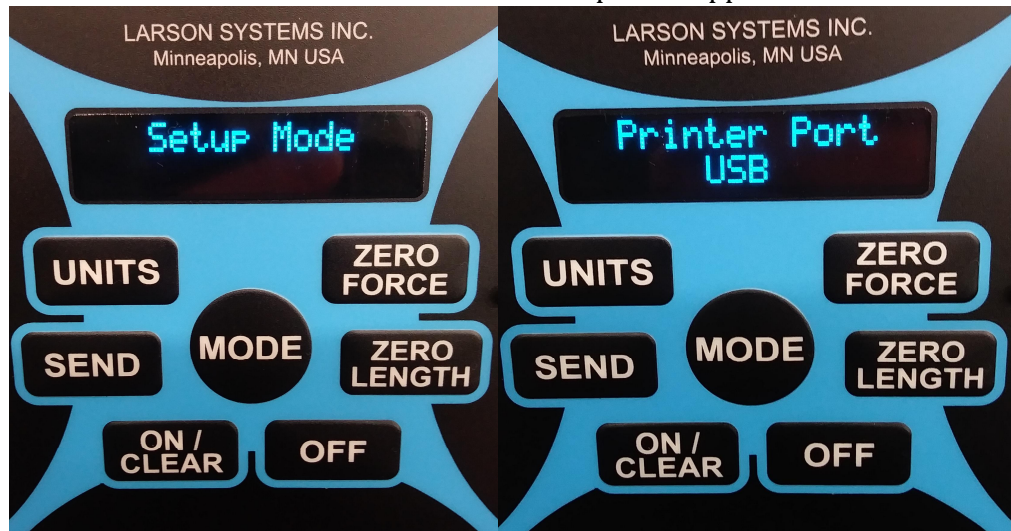
9) Click OK to close the USB Serial Port (COMx) Properties windows.

10) Close the Device Manager windows.

11) The computer can now receive data from the tester over the Com port selected in step 8.

12) To send data from the tester to the computer, the tester's Printer port must be set to USB.

- a. Press the **MODE** button on the tester until Setup Mode appears.



- b. Press the **ZERO LENGTH** button until the Printer Port setting appears.
- c. If the setting is "Serial", then press the **ZERO FORCE** button to change it to "USB".
- d. If the tester is being used with the Spring Data Collector software, the Console Port must also be set to "USB". Press the **ZERO LENGTH** button until the Console Port setting appears, then press the **ZERO FORCE** button to change the setting to "USB".
- e. Press the **MODE** button to return to testing mode, either Manual or Peak.

13) Data can now be sent to the computer by pressing the Send button.